

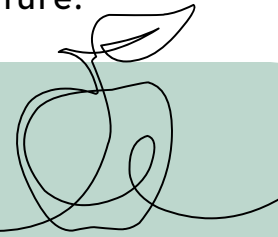
Name _____

Structure of a **POEM**

Directions:

Answer the following questions about the poem below. Identify the lines and stanzas, and describe the poem's structure.

Harvest Time



Golden fields under the sun,
Harvest time has now begun.
Tractors hum and workers cheer,
Autumn's bounty, drawing near.

Apples ripe on orchard trees,
Scents of harvest on the breeze.
Crisp leaves crunch beneath our feet,
Harvest season, so complete.

1. How many lines are in the first stanza?
2. How many lines are in the second stanza?
3. How many lines are in the poem?
4. If you were to write another stanza, how many lines would it be?