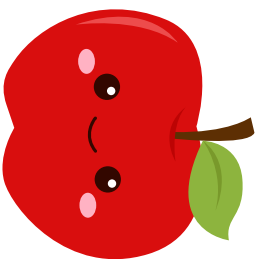


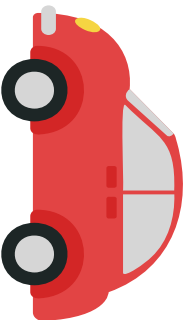
A

apple



C

car



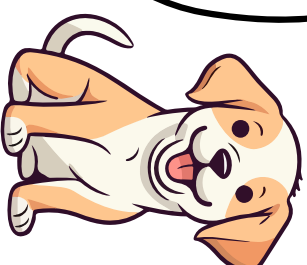
B

broom



D

dog

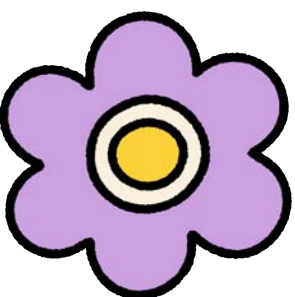


H



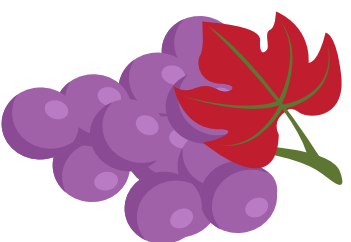
elephant

F



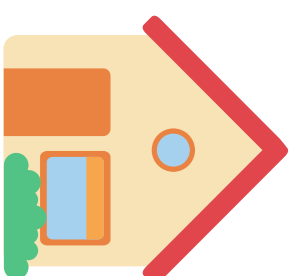
flower

G



grapes

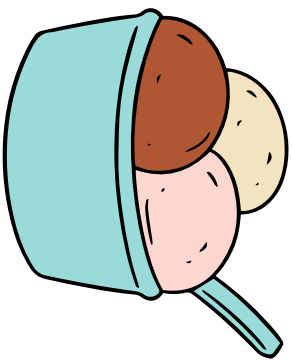
H



house

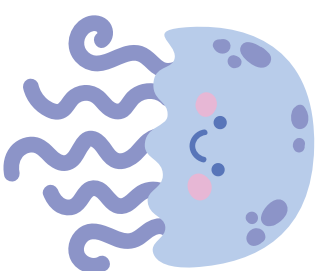
I

ice cream



J

jellyfish



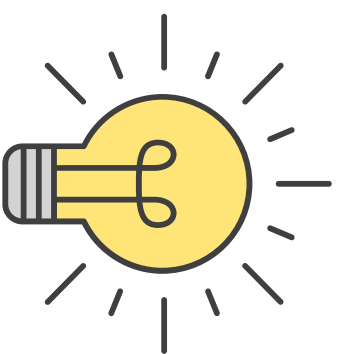
K

king

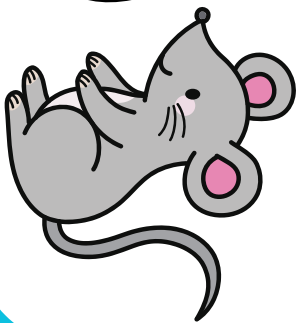


L

lightbulb



M



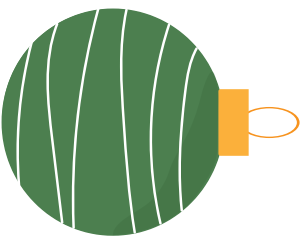
mouse

N



necklace

O



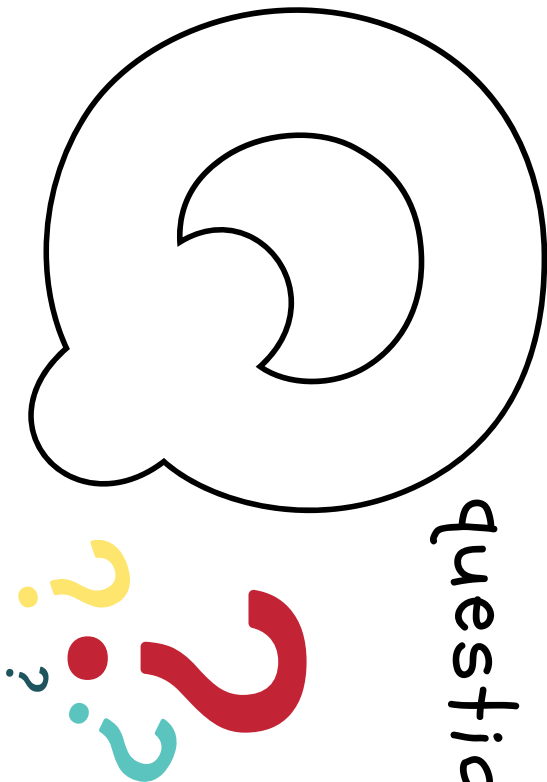
ornament

P




pizza

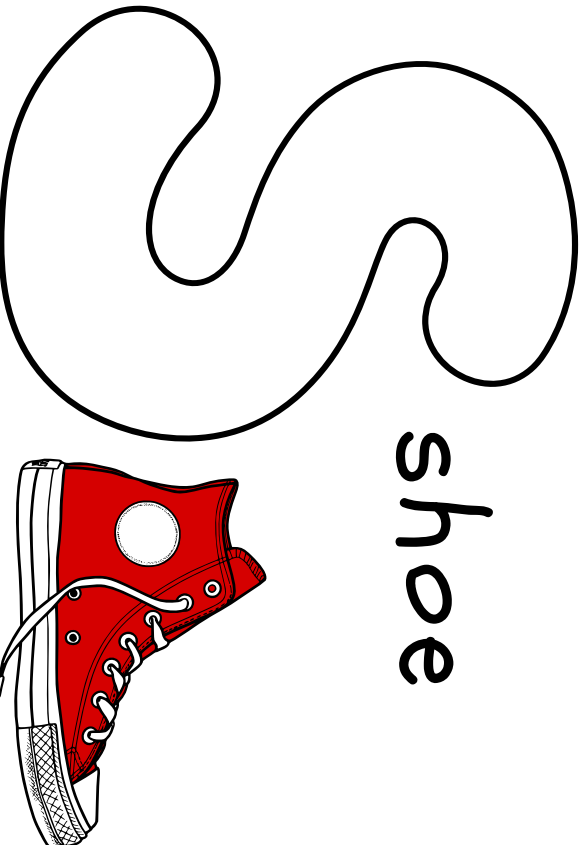
Q question

A large, hollow outline of the uppercase letter 'Q' is positioned at the top. Below it is a colorful question mark with a red stem, a blue dot, and a yellow top, surrounded by smaller question marks in yellow, blue, and red.

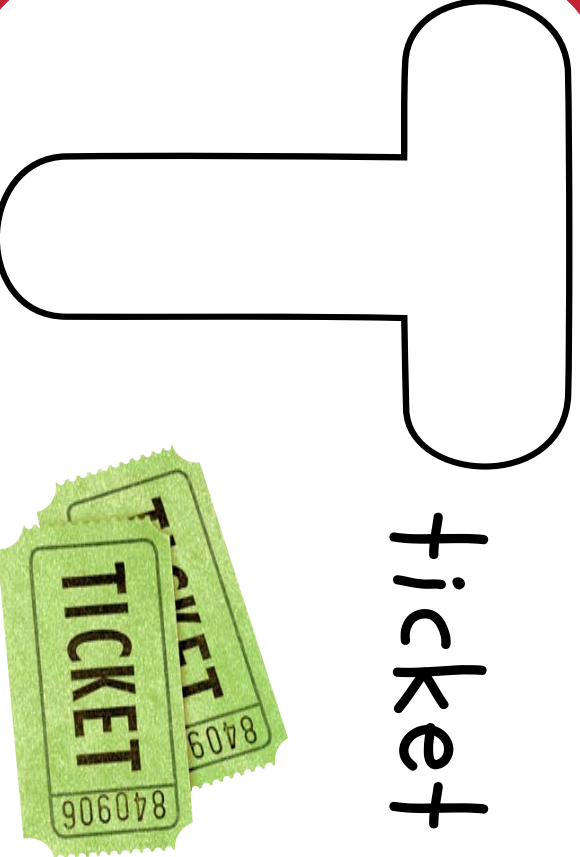
R rainbow

A large, hollow outline of the uppercase letter 'R' is positioned at the top. Below it is a vibrant rainbow with seven distinct bands of color: red, orange, yellow, green, blue, indigo, and violet.

S shoe

A large, hollow outline of the uppercase letter 'S' is positioned at the top. Below it is a red sneaker with white laces and a white sole, shown from a side profile.

T ticket

A large, hollow outline of the uppercase letter 'T' is positioned at the top. Below it are two green tickets with the word 'TICKET' printed on them and the number '840906' at the bottom.

